

ULTIFRESH.NET

we deliver fresh apparels

Follow Us @:



Website



Facebook



Instagram

Visit Us @:
<https://www.ultifresh.net>

ULTIFRESH

Apparels

Anti-Bacterial | Anti-Odor

Vol. 7
2023 / 2024



Designed in Singapore

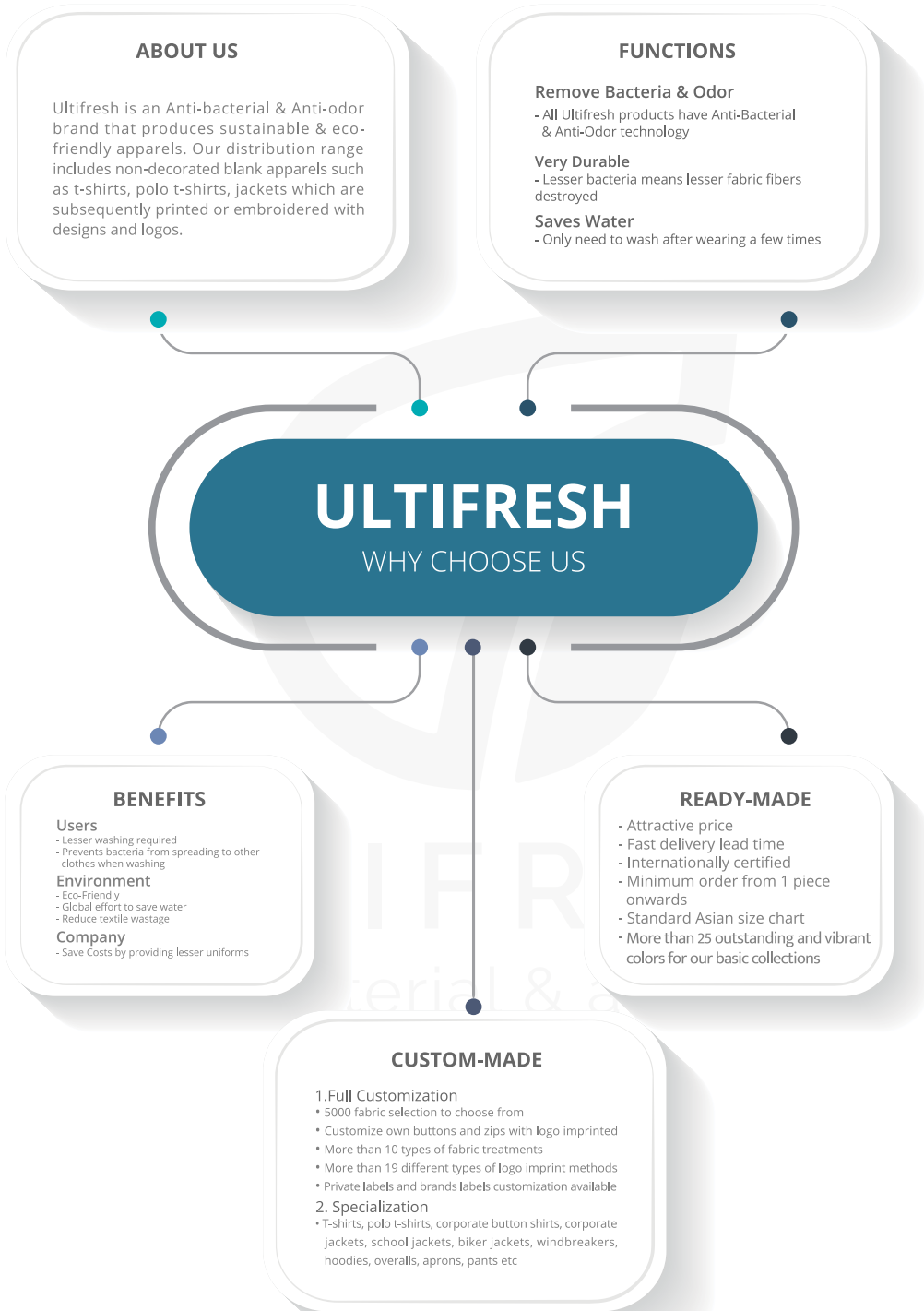


NEW!
BCR0102 : BLACK
BEAM CLOVERPLUS
COTTON

**HOT
SELLING!**

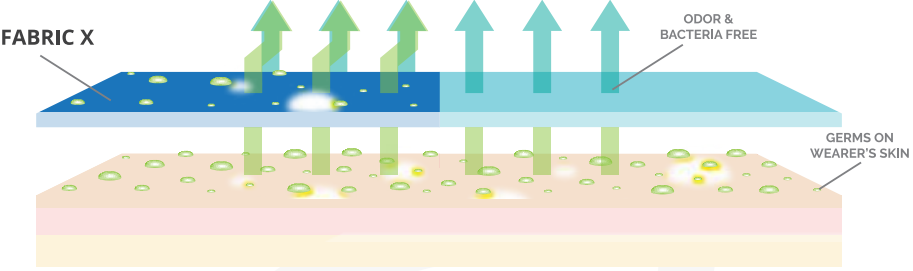


2023 - 2024



ABOUT ULTIFRESH

Ultifresh is a patented fabric technology that kills 99.94% bacteria permanently. The anti-bacterial & anti-odor features can be integrated into any fabric without affecting the outlook and the hand feel of the apparel.



BENEFITS OF ULTIFRESH

Ultifresh products are designed with copper's anti-microbial properties, allowing it to self sterilize. It can also prevent bacteria growth, making it a safer apparel for everyone.

ANTI-ODOR

Ultifresh technology eliminates odor causing germs on the fabric itself, leaving the wearer fresh all day long.

INCREASED DURABILITY

Ultifresh prevents microbes from living on the apparel. Thus, it increases the longevity of the apparel, resulting in lesser textile wastage each year.

ANTI-BACTERIAL

We come into contact with thousands of unseen bacteria everyday. Ultifresh fabric solution kills bacteria minutes upon contact.

SAVES WATER

Ultifresh apparels require lesser washing cycles and reduces water usage by up to 75%! This unique feature allows the wearer to save water without compromising on safety.

COST SAVING

Ultifresh lowers the turnover of uniforms and apparels due to its durability, which allows wearer to wear longer without washing.

ECO-FRIENDLY

Ultifresh supports the global Go-Green effort in conserving the Earth's natural resources such as water and reducing textile wastage.

CONTENTS

	Latest Collection	1 - 2
	Why Choose Ultifresh	3
	About Ultifresh	4
01	<u>Ultifresh Towel Series</u>	
	Anti-Bacterial Quick-Dry Towel	7 - 8
02	<u>Ultifresh Performance Series</u>	
	Crew Neck	9 - 12
	Polo T-Shirt	13 - 14
	Crew Neck Long Sleeve	15 - 16
	Polo T-Shirt Long Sleeve	17 - 18
	Sports Singlet	19 - 20
	Sports Shorts	21 - 22
03	<u>Ultifresh Design Series</u>	
	Contrast Series	23 - 30
	Oriental Series	31 - 32
	Heather Series	33 - 34
	Hybrid Series	35 - 38
	Double Pique Series	39 - 42
04	<u>Ultifresh Outerwear Series</u>	
	Bomber Jacket	43 - 44
	Full Moon Zip Up Jacket	45 - 46
	Varsity Jacket	47 - 48
05	<u>BEAM Series</u>	
	Cotton Short Sleeve T-Shirt (Kids)	51 - 52
	Cotton Short Sleeve T-Shirt	53 - 56
	Cotton Polo T-Shirt	57 - 58
	Cotton Long Sleeve T-Shirt	59 - 60
	Hoodie Without Zip	61 - 62
	Hoodie With Zip	63 - 64
	Long Sleeve Sweat Shirt	65 - 66
	Jacket In A Bag	67 - 68
	Polyester Apron	69 - 70
	Baseball Cap	71 - 72
	Oxford Corporate Shirt	73 - 74
	Corporate Long Sleeve Button Shirt	75 - 76
	Corporate Short Sleeve Button Shirt	77 - 78
	Corporate Blazer, Pant & Skirt	79 - 82



- Anti-Bacterial
- Nylon Chinlon, Polyester
- Compact, Lightweight, Quick-Dry
- Open For Customization Of Logo Webbing



**USTW05
MAROON**



ANTI-BACTERIAL QUICK-DRY TOWEL

UBTW BATH TOWEL

Length	Width	Weight
55.1"/140cm	29.5"/75cm	220g

Note : Size may varies +/-5% from the above mentioned chart.



UBTW01
PEARL WHITE



UBTW03
NAVY



UBTW05
MAROON



UBTW06
LIGHT GREY



UBTW10
LIGHT BLUE



UBTW11
ADMIRAL BLUE



UBTW23
PURPLE



UBTW28
LIGHT PINK



UBTW46
KELLY GREEN

USTW SPORTS TOWEL

Length	Width	Weight
25.6"/65cm	13.8"/35cm	40g

Note : Size may varies +/-5% from the above mentioned chart.



USTW01
PEARL WHITE



USTW03
NAVY



USTW05
MAROON



USTW06
LIGHT GREY



USTW10
LIGHT BLUE



USTW11
ADMIRAL BLUE



USTW23
PURPLE



USTW28
LIGHT PINK



USTW46
KELLY GREEN

ULTIFRESH PERFORMANCE

Ultifresh makes you feel comfortable the way it is meant to be. #feelgood

SGS Intertek
TEST REPORT Digital Quality. Assured.

UDF2202
Black

ULTIFRESH
anti-bacterial & anti-odor



Anti Bacterial & Anti-Odor Finishing

Self Fabric Collar



UDF22

CREW NECK T-SHIRT (KIDS)

Size	Shoulder	Chest	Sleeve	Length
24	11.5"	25"	4.5"	15.5"
26	12"	27"	5"	17"
28	12.5"	29"	5.5"	18.5"
30	13"	31"	6"	20"
32	13.5"	33"	6.5"	21.5"

Note : Size may varies +/-5% from the above mentioned chart.

- 100% Performance Dri-Fit Polyester
- Microfiber Polyester Eyelet Weave

- 170gsm | 5.01oz (UDF2201)
- 160gsm | 4.72oz (THE REST)

COLORS SELECTION





UDF0126
TIFFANY BLUE

ULTIFRESH PERFORMANCE

UDF01

CREW NECK T-SHIRT (UNISEX)

- 100% Performance Dri-Fit Polyester
- Microfiber Polyester Eyelet Weave
- Anti Bacterial & Anti Odor Finishing
- Self Fabric Collar
- Eco Friendly & Water Saving

- 170gsm | 5.01oz (UDF0101)
- 160gsm | 4.72oz (THE REST)

Size	Shoulder	Chest	Sleeve	Length
2XS	15"	34"	7"	25"
XS	16"	36"	7.5"	26"
S	17"	38"	8"	27"
M	18"	40"	8.5"	28"
L	19"	42"	9"	29"
XL	20"	44"	9.5"	30"
2XL	21"	46"	10"	31"
3XL	22"	48"	10.5"	32"
5XL	24"	52"	11.5"	33.5"
7XL	26"	56"	12"	36"

Note : Size may varies +/-5% from the above mentioned chart.

COLORS SELECTION





UDF0509
MAGENTA PINK

UDF0521
BASIL GREEN

ULTIFRESH PERFORMANCE

UDF05 POLO T-SHIRT (UNISEX)

- 100% Performance Dri-Fit Polyester
- Microfiber Polyester Eyelet Weave
- Anti Bacterial & Anti Odor Finishing
- Matching Collar Rib
- Eco Friendly & Water Saving
- 170gsm | 5.01oz (UDF0501)
- 160gsm | 4.72oz (THE REST)

Size	Shoulder	Chest	Sleeve	Length
2XS	15"	34"	7"	25"
XS	16"	36"	7.5"	26"
S	17"	38"	8"	27"
M	18"	40"	8.5"	28"
L	19"	42"	9"	29"
XL	20"	44"	9.5"	30"
2XL	21"	46"	10"	31"
3XL	22"	48"	10.5"	32"
5XL	24"	52"	11.5"	33.5"
7XL	26"	56"	12"	36"

Note : Size may varies +/-5% from the above mentioned chart.

COLORS SELECTION



ULTIFRESH PERFORMANCE

UDF26

CREW NECK LONG SLEEVE T-SHIRT (UNISEX)

- 100% Performance Dri-Fit Polyester
- Microfiber Polyester Eyelet Weave
- Eco Friendly & Water Saving
- 170gsm | 5.01oz (UDF2601)
- 160gsm | 4.72oz (THE REST)

Size	Shoulder	Chest	Sleeve	Length
2XS	15"	34"	19"	25"
XS	16"	36"	20"	26"
S	17"	38"	21"	27"
M	18"	40"	22"	28"
L	19"	42"	23"	29"
XL	20"	44"	23.5"	30"
2XL	21"	46"	23.5"	31"
3XL	22"	48"	23.5"	32"
5XL	24"	52"	24.5"	33.5"
7XL	26"	56"	25"	35.5"

Note : Size may varies +/-5% from the above mentioned chart.

COLORS SELECTION





ULTIFRESH PERFORMANCE

UDF27

POLO LONG SLEEVE T-SHIRT (UNISEX)

- 100% Performance Dri-Fit Polyester
- Microfiber Polyester Eyelet Weave
- Eco Friendly & Water Saving
- 170gsm | 5.01oz (UDF2701)
- 160gsm | 4.72oz (THE REST)

Size	Shoulder	Chest	Sleeve	Length
2XS	15"	34"	19"	25"
XS	16"	36"	20"	26"
S	17"	38"	21"	27"
M	18"	40"	22"	28"
L	19"	42"	23"	29"
XL	20"	44"	23.5"	30"
2XL	21"	46"	23.5"	31"
3XL	22"	48"	23.5"	32"
5XL	24"	52"	24.5"	33.5"
7XL	26"	56"	25"	35.5"

Note : Size may varies +/-5% from the above mentioned chart.

COLORS SELECTION

					
UDF2701 PEARL WHITE	UDF2702 ONYX BLACK	UDF2703 NAVY BLUE	UDF2704 CRIMSON RED	UDF2705 MAROON RED	UDF2706 LIGHT GREY NEW
					
UDF2707 IRON GREY	UDF2708 TURQUOISE NEW	UDF2709 MAGENTA PINK NEW	UDF2710 LIGHT BLUE	UDF2711 ADMIRAL BLUE NEW	UDF2712 ROYAL BLUE
					
UDF2713 ORANGE	UDF2716 BANANA NEW	UDF2718 LIME GREEN NEW	UDF2720 ARMY GREEN NEW	UDF2721 BASIL GREEN	UDF2722 BARLEY BEIGE NEW
					
UDF2723 ROYAL PURPLE NEW	UDF2726 TIFFANY BLUE NEW	UDF2727 FOREST GREEN NEW	UDF2728 LIGHT PINK NEW		



ULTIFRESH PERFORMANCE

UDF02

SPORTS SINGLET (UNISEX)

- 100% Dri-Fit Polyester
- Interlock Weave
- Moisture Wicking & Sweat Absorbent
- Eco Friendly & Water Saving

• 160gsm | 4.72oz

Size	Shoulder	Chest	Length
2XS	15.5"	34"	25"
XS	16"	36"	26"
S	16.5"	38"	27"
M	17"	40"	28"
L	17.5"	42"	29"
XL	18"	44"	30"
2XL	18"	46"	31"
3XL	18.5"	48"	32"
5XL	19.5"	52"	33.5"

Note : Size may varies +/-5% from the above mentioned chart.

COLORS SELECTION



UDF0201
PEARL WHITE



UDF0202
ONYX BLACK



UDF0203
NAVY BLUE



UDF0204
CRIMSON RED



UDF0205
MAROON RED



UDF0207
IRON GREY



UDF0212
ROYAL BLUE



UDF0221
BASIL GREEN



ULTIFRESH PERFORMANCE

UDF06

SPORTS SHORTS (UNISEX)

- 100% Dri-Fit Polyester
 - Interlock Weave
 - Moisture Wicking & Sweat Absorbent
 - Eco Friendly & Water Saving
- 160gsm | 4.72oz

Size	Waist	Length
2XS	28"	14.5"
XS	29"	15"
S	31"	15.5"
M	32"	16"
L	34"	17"
XL	36"	17.5"
2XL	37"	18"
3XL	38"	19"
5XL	40"	19"

Note : Size may varies +/-5% from the above mentioned chart.

COLORS SELECTION



UDF0601
PEARL WHITE



UDF0602
ONYX BLACK



UDF0603
NAVY BLUE



UDF07
SIDE PANEL CREW NECK
T-SHIRT (UNISEX)

- 100% Dri-Fit Polyester
- Interlock Weave
- Moisture Wicking & Sweat Absorbent
- Eco Friendly & Water Saving

ULTIFRESH
CONTRAST

Size	Shoulder	Chest	Sleeve	Length
2XS	15"	34"	7"	25"
XS	16"	36"	7.5"	26"
S	17"	38"	8"	27"
M	18"	40"	8.5"	28"
L	19"	42"	9"	29"
XL	20"	44"	9.5"	30"
2XL	21"	46"	10"	31"
3XL	22"	48"	10.5"	32"
5XL	24"	52"	11.5"	33.5"

Note : Size may varies +/-5% from the above mentioned chart.

• 160gsm | 4.72oz

COLORS SELECTION



UDF0701
WHITE + ORANGE



UDF0702
BLACK + WHITE



UDF0703
NAVY + WHITE



UDF0710
LIGHT BLUE + WHITE



UDF0723
PURPLE + WHITE



UDF0733
BLUE + ORANGE



Contrast Color Piping with Raglan Sleeve Cut

Anti Bacterial & Anti-Odor Finishing



ULTIFRESH CONTRAST

Size	Chest	Sleeve	Length
2XS	34"	7"	25"
XS	36"	7.5"	26"
S	38"	8"	27"
M	40"	8.5"	28"
L	42"	9"	29"
XL	44"	9.5"	30"
2XL	46"	10"	31"
3XL	48"	10.5"	32"
5XL	52"	11.5"	33.5"

UDP08 VOV PIPING CREW NECK T-SHIRT (UNISEX)

- 100% Dri-Fit Polyester
- Eyelet Weave
- Moisture Wicking & Sweat Absorbent
- Eco Friendly & Water Saving

Note : Size may varies +/-5% from the above mentioned chart.

- 170gsm | 5.01oz (UDP0801)
- 160gsm | 4.72oz (THE REST)

COLORS SELECTION



UDP0801
WHITE + BLACK



UDP0802
BLACK + RED



UDP0807
DARK GREY + WHITE



UDP0813
ORANGE + BLACK



Anti Bacterial
& Anti-Odor
Finishing

Contrast Side Panel



UDF13
CS SASH POLO T-SHIRT
(UNISEX)

- 100% Dri-Fit Polyester
- Interlock Weave
- Moisture Wicking & Sweat Absorbent
- Eco Friendly & Water Saving

ULTIFRESH
CONTRAST

Size	Shoulder	Chest	Sleeve	Length
2XS	15"	34"	7"	25"
XS	16"	36"	7.5"	26"
S	17"	38"	8"	27"
M	18"	40"	8.5"	28"
L	19"	42"	9"	29"
XL	20"	44"	9.5"	30"
2XL	21"	46"	10"	31"
3XL	22"	48"	10.5"	32"
5XL	24"	52"	11.5"	33.5"

Note : Size may varies +/-5% from the above mentioned chart.

• 160gsm | 4.72oz

COLORS SELECTION



UDF1301
WHITE + GREEN
+ DARK GREY



UDF1302
BLACK + RED



UDF1306
LIGHT GREY +WHITE
+ BLUE



UDF1307
DARK GREY +WHITE
+ BLUE



ULTIFRESH CONTRAST

UDF19 T MAX POLO T-SHIRT (UNISEX)

- 100% Dri-Fit Polyester
- Interlock Weave
- Moisture Wicking & Sweat Absorbent
- Eco Friendly & Water Saving

Size	Shoulder	Chest	Sleeve	Length
2XS	15"	34"	7"	25"
XS	16"	36"	7.5"	26"
S	17"	38"	8"	27"
M	18"	40"	8.5"	28"
L	19"	42"	9"	29"
XL	20"	44"	9.5"	30"
2XL	21"	46"	10"	31"
3XL	22"	48"	10.5"	32"
5XL	24"	52"	11.5"	33.5"

Note : Size may varies +/-5% from the above mentioned chart.

• 160gsm | 4.72oz

COLORS SELECTION



UDF1902
BLACK + RED



UDF1906
GREY + LIGHT BLUE



UDF1912
ROYAL BLUE + GREY



UDF1930
GREEN + WHITE



ULTIFRESH ORIENTAL

UDF20 ZIP UP COLLAR POLO T-SHIRT (UNISEX)

- 100% Dri-Fit Polyester
- Interlock Weave
- Contrast Piping
- Moisture Wicking & Sweat Absorbent
- Eco Friendly & Water Saving

Size	Shoulder	Chest	Sleeve	Length
2XS	15"	34"	7"	25"
XS	16"	36"	7.5"	26"
S	17"	38"	8"	27"
M	18"	40"	8.5"	28"
L	19"	42"	9"	29"
XL	20"	44"	9.5"	30"
2XL	21"	46"	10"	31"
3XL	22"	48"	10.5"	32"
5XL	24"	52"	11.5"	33.5"

Note : Size may varies +/-5% from the above mentioned chart.

• 160gsm | 4.72oz

COLORS SELECTION



UDF2001
WHITE + YELLOW



UDF2002
BLACK + RED



UDF2003
DARK BLUE + ROYAL BLUE



UDF2004
RED + BLACK



UDF2010
LIGHT BLUE + WHITE



UDF2013
ORANGE + WHITE



UDF2027
WHITE + RED





UDF17
EDGE CREW NECK
T-SHIRT (UNISEX)

- 47% Performance Polyester
- 47% Melange Dri-Fit +6% Spandex
- Moisture Wicking & Sweat Absorbent
- Eco Friendly & Water Saving

ULTIFRESH
HEATHER

Size	Shoulder	Chest	Sleeve	Length
2XS	15"	34"	7"	25"
XS	16"	36"	7.5"	26"
S	17"	38"	8"	27"
M	18"	40"	8.5"	28"
L	19"	42"	9"	29"
XL	20"	44"	9.5"	30"
2XL	21"	46"	10"	31"
3XL	22"	48"	10.5"	32"
5XL	24"	52"	11.5"	33.5"

Note : Size may varies +/-5% from the above mentioned chart.

• 170gsm | 5.01oz

COLORS SELECTION



UDF1702
ONYX BLACK



UDF1703
NAVY BLUE



UDF1706
LIGHT GREY



UDF1710
LIGHT BLUE



UDF1712
ROYAL BLUE



ULTIFRESH
anti-bacterial & anti-odor

GOLD
SERIES AVAILABLE

intertek
Total Quality. Assured.

SGS
TEST REPORT



UCP11
MINIMALIST POLO T-SHIRT
(UNISEX)

- 50% Polyester + 50% Cotton
- Outer Polyester + Inner Cotton
- Moisture Wicking & Sweat Absorbent
- Eco Friendly & Water Saving

ULTIFRESH
HYBRID

Size	Shoulder	Chest	Sleeve	Length
2XS	15"	34"	7"	25"
XS	16"	36"	7.5"	26"
S	17"	38"	8"	27"
M	18"	40"	8.5"	28"
L	19"	42"	9"	29"
XL	20"	44"	9.5"	30"
2XL	21"	46"	10"	31"
3XL	22"	48"	10.5"	32"
5XL	24"	52"	11.5"	33.5"
7XL	26"	56"	11.5"	35.5"

Note : Size may varies +/-5% from the above mentioned chart.
• 180gsm | 5.31oz

COLORS SELECTION



UCP1101
WHITE + BLACK



UCP1102
BLACK + WHITE



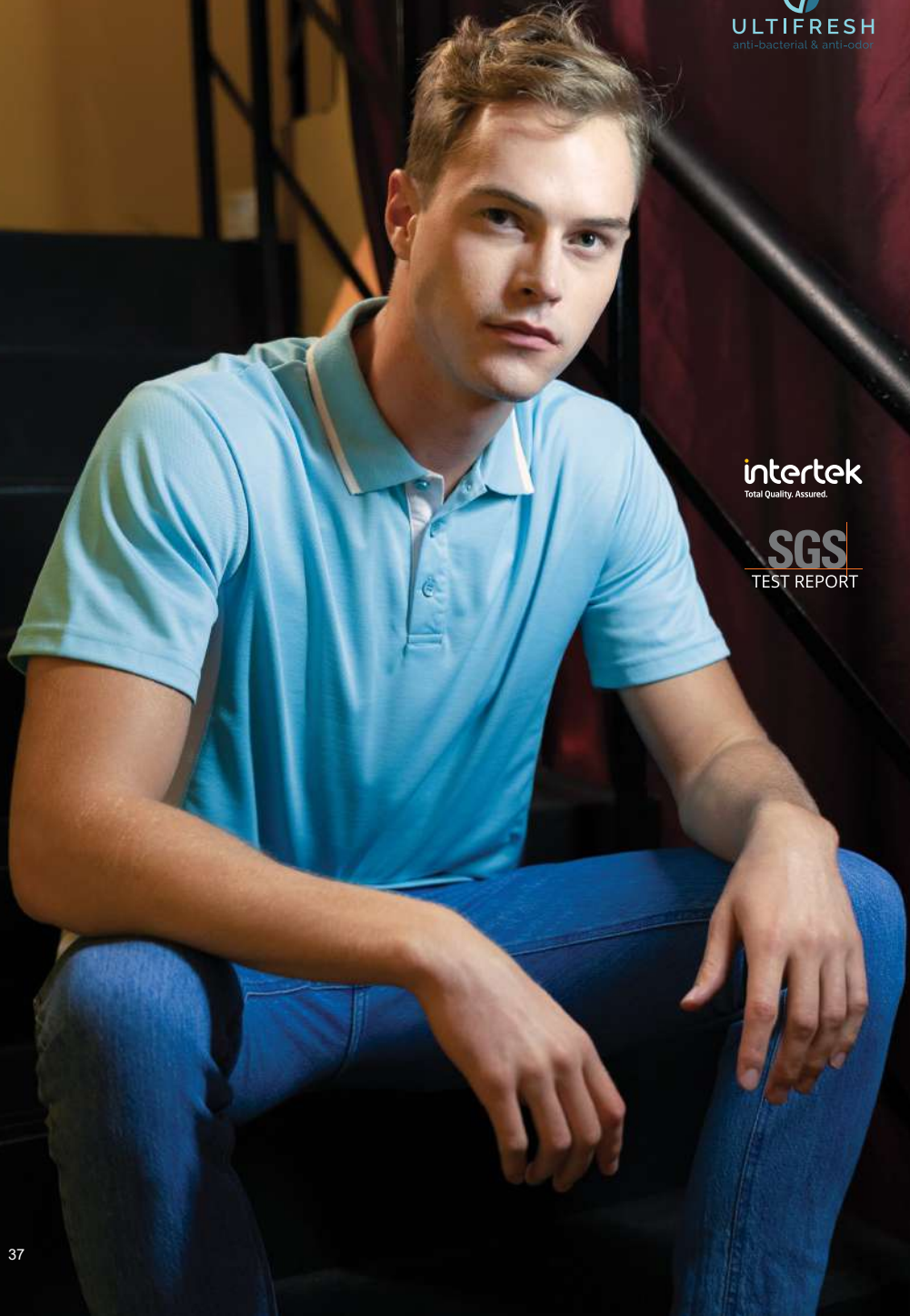
UCP1103
NAVY + WHITE



UCP1105
MAROON + BLACK



UCP1129
BLACK + GOLD



ULTIFRESH
anti-bacterial & anti-odor

intertek
Total Quality. Assured.

SGS
TEST REPORT



UCP13
CONTRA POLO T-SHIRT
(UNISEX)

- 50% Polyester + 50% Cotton
- Outer Polyester + Inner Cotton
- Moisture Wicking & Sweat Absorbent
- Eco Friendly & Water Saving

ULTIFRESH
HYBRID

Size	Shoulder	Chest	Sleeve	Length
2XS	15"	34"	7"	25"
XS	16"	36"	7.5"	26"
S	17"	38"	8"	27"
M	18"	40"	8.5"	28"
L	19"	42"	9"	29"
XL	20"	44"	9.5"	30"
2XL	21"	46"	10"	31"
3XL	22"	48"	10.5"	32"
5XL	24"	52"	11.5"	33.5"

Note : Size may varies +/-5% from the above mentioned chart.

• 190gsm | 5.60oz

COLORS SELECTION



UCP1301
WHITE + GREY



UCP1307
GREY + RED



UCP1310
LIGHT BLUE + WHITE



UCP1334
WHITE + GREEN



UCP1335
WHITE + LIGHT BLUE

ULTIFRESH DOUBLE PIQUE



UH27 PREMIUM PLAIN POLO T-SHIRT (UNISEX)

- 60% Polyester + 40% Cotton
- Moisture Wicking & Sweat Absorbent
- Eco Friendly & Water Saving
- 220gsm | 6.49oz

ULTIFRESH
anti-bacterial & anti-odor

SGS
TEST REPORT

intertek
Total Quality Assured.

Size	Shoulder	Chest	Sleeve	Length
2XS	15"	34"	7"	25"
XS	16"	36"	7.5"	26"
S	17"	38"	8"	27"
M	18"	40"	8.5"	28"
L	19"	42"	9"	29"
XL	20"	44"	9.5"	30"
2XL	21"	46"	10"	31"
3XL	22"	48"	10.5"	32"
5XL	24"	52"	11.5"	33.5"
7XL	26"	56"	12"	36"

Note : Size may varies +/-5% from the above mentioned chart.

COLORS SELECTION



UH2701
WHITE



UH2702
BLACK



UH2706
LIGHT GREY



UH2707
DARK GREY



UH2712
NAVY BLUE

ULTIFRESH DOUBLE PIQUE



Anti Bacterial
& Anti-Odor
Finishing

Double
Pique Knit



UH02

FD TWIN TIPPED POLO T-SHIRT (UNISEX)

- 60% Polyester + 40% Cotton
- Dual Stripe Design
- Moisture Wicking & Sweat Absorbent
- Eco-Friendly & Water Saving



Size	Shoulder	Chest	Sleeve	Length
2XS	15"	34"	7"	25"
XS	16"	36"	7.5"	26"
S	17"	38"	8"	27"
M	18"	40"	8.5"	28"
L	19"	42"	9"	29"
XL	20"	44"	9.5"	30"
2XL	21"	46"	10"	31"
3XL	22"	48"	10.5"	32"
4XL	23"	50"	11"	33"
5XL	24"	52"	11.5"	33.5"

Note : Size may varies +/-5% from the above mentioned chart.

• 220gsm | 6.49oz



UH0202
BLACK



UH0206
LIGHT GREY



UH0207
DARK GREY



UH0212
NAVY BLUE



ULTIFRESH DOUBLE PIQUE



Anti Bacterial
& Anti-Odor
Finishing

Contrast
Mandarin
Collar Design



UH03

ACE COLLAR POLO T-SHIRT (UNISEX)

- 60% Polyester + 40% Cotton
- Dual Stripe Design
- Moisture Wicking & Sweat Absorbent
- Eco-Friendly & Water Saving



UH0301
WHITE + NAVY + RED



UH0302
BLACK + GREY + RED



UH0307
NAVY + GREY + RED



UH0330
LIGHT GREY + BLACK + RED

Size	Shoulder	Chest	Sleeve	Length
2XS	15"	34"	7"	25"
XS	16"	36"	7.5"	26"
S	17"	38"	8"	27"
M	18"	40"	8.5"	28"
L	19"	42"	9"	29"
XL	20"	44"	9.5"	30"
2XL	21"	46"	10"	31"
3XL	22"	48"	10.5"	32"
5XL	24"	52"	11.5"	33.5"

Note : Size may varies +/-5% from the above mentioned chart.

• 220gsm | 6.49oz



ULTIFRESH BOMBER

Anti Bacterial
& Anti-Odor
Finishing

Matching
Collar Rib



UVJ01

ZIP UP JACKET (UNISEX)

- 100% Performance Dri-Fit Polyester
- 100% Polyester Inner Lining
- Moisture Wicking & Sweat Absorbent
- Eco Friendly & Water Saving

Size	Shoulder	Chest	Sleeve	Length
2XS	16"	37"	21.5"	25"
XS	17"	39"	22.5"	26"
S	18"	41"	23.5"	27"
M	18.5"	43"	24"	28"
L	19"	45"	25"	29"
XL	20"	47"	25.5"	30"
2XL	21"	49"	26.5"	31"
3XL	22"	51"	27"	32"
4XL	23"	53"	27.5"	33.5"
5XL	24"	55"	28"	34"
7XL	26"	59"	29"	36"

Note : Size may varies +/-5% from the above mentioned chart.

- Shell : 55gsm | 1.62oz
- Inner : 160gsm | 4.72oz



COLORS SELECTION



UVJ0102
BLACK



UVJ0103
NAVY



UVJ0105
MAROON



UVJ0107
DARK GREY
NEW



UVJ0111
KHAKE
NEW



UVJ0120
OLIVE



UVJ0128
ORANGE



UVJ03
ZIP UP JACKET (UNISEX)

- 92% Polyester + 8% Spandex
- Side Zip Pocket
- Matching Collar Rib
- Moisture Wicking & Sweat Absorbent
- Eco Friendly & Water Saving

ULTIFRESH
FULL MOON

Size	Shoulder	Chest	Sleeve	Length
2XS	16"	37"	21.5"	25"
XS	17"	39"	22.5"	26"
S	18"	41"	23.5"	27"
M	18.5"	43"	24"	28"
L	19"	45"	25"	29"
XL	20"	47"	25.5"	30"
2XL	21"	48"	26.5"	31"
3XL	22"	51"	27"	32"
4XL	23"	53"	27.5"	33"
6XL	25"	57"	29"	35"

Note : Size may varies +/-5% from the above mentioned chart.

• 280gsm | 8.26oz

COLORS SELECTION



UVJ0302
BLACK



UVJ0303
NAVY



UVJ0307
LIGHT GREY



ULTIFRESH VARSITY JACKET

UVJ05

VARSITY JACKET (UNISEX)



- 92% Polyester + 8% Spandex
- Color Matching Matt Button
- 2 Front Pockets
- Moisture Wicking & Sweat Absorbent
- Eco Friendly & Water Saving

Size	Shoulder	Chest	Sleeve	Length
2XS	16"	37"	21.5"	25"
XS	17"	39"	22.5"	26"
S	18"	41"	23.5"	27"
M	18.5"	43"	24"	28"
L	19"	45"	25"	29"
XL	20"	47"	25.5"	30"
2XL	21"	48"	26.5"	31"
3XL	22"	51"	27"	32"
4XL	23"	53"	27.5"	33"
6XL	25"	57"	29"	35"

Note : Size may varies +/-5% from the above mentioned chart.

• 280gsm | 8.26oz

COLORS SELECTION



UVJ0502
BLACK + WHITE



UVJ0503
NAVY BLUE + WHITE



UVJ0504
CRIMSON RED + WHITE



UVJ0512
ROYAL BLUE + WHITE



UVJ0526
BLACK + RED



**BEAM APPAREL PROMOTES
NEW MINIMALISM**

*A concept which allows our daily wear to be something comfortable,
contemporary and be worn in nearly all occasions.*



CLOVERPLUS
extra soft . extra comfort

Be Amazed With Cloverplus Cotton





BCK0103 : NAVY BLUE
BEAM CLOVERPLUS
COTTON

BEAM PREMIUM COTTON

NEW BCK01

SHORT SLEEVE T-SHIRT (KIDS)

- 100% BEAM Premium Cotton
- Available in 10 Colors
- Comfortable & Soft
- Enzyme Wash
- Matching Ribbed Collar
- Pre-Shrunk
- Tubular Body

Size	Shoulder	Chest	Sleeve	Length
2-4	11"	24"	5"	17"
5-6	12"	26"	6"	18"
7-8	13"	28"	6.5"	20"
9-10	15"	30"	6.5"	21"
11-12	15"	34"	7"	23"

Note : Size may varies +/-5% from the above mentioned chart.

- 170gsm | 5.01oz (BCK0101)
- 160gsm | 4.72oz (THE REST)



Cloverplus Cotton are enzyme washed & they are more comfortable than normal cotton. It's the perfect solution for work, play & daily wear.

COLORS SELECTION



BCK0101
WHITE



BCK0102
BLACK



BCK0103
NAVY BLUE



BCK0104
RED



BCK0105
MAROON



BCK0106
LIGHT GREY



BCK0112
ROYAL BLUE



BCK0113
ORANGE



BCK0117
YELLOW



BCK0146
KELLY GREEN

BCR0105 : MAROON
BEAM CLOVERPLUS
COTTON

BEAM PREMIUM COTTON

NEW BCR01
SHORT SLEEVE
T-SHIRT (UNISEX)

- 100% BEAM Premium Cotton
 - Available in 10 Colors
 - Comfortable & Soft
 - Enzyme Wash
 - Matching Ribbed Collar
 - Pre-Shrunk
 - Suitable for all Asian Physiques
 - Tubular Body
- 170gsm | 5.01oz (BCR0101)
• 160gsm | 4.72oz (THE REST)

Size	Shoulder	Chest	Sleeve	Length
XS	16"	36"	7"	25.5"
S	16.5"	38"	8"	27"
M	17.5"	40"	8.5"	28"
L	18.5"	42"	8.5"	29"
XL	19.5"	44"	9"	30"
2XL	21"	46"	9.5"	31"
3XL	22"	48"	10"	32"
4XL	22.5"	50"	10.5"	33"
5XL	23"	52"	11"	34"
7XL	25"	56"	12"	36"

Note : Size may varies +/-5% from the above mentioned chart.



Cloverplus Cotton are enzyme washed & they are more comfortable than normal cotton. It's the perfect solution for work, play & daily wear.

COLORS SELECTION



BCR0101
WHITE



BCR0102
BLACK



BCR0103
NAVY BLUE



BCR0104
RED



BCR0105
MAROON



BCR0106
LIGHT GREY



BCR0112
ROYAL BLUE



BCR0113
ORANGE



BCR0117
YELLOW



BCR0146
KELLY GREEN

BCRG0102 : BLACK
BEAM CLOVERPLUS
COTTON

BEAM SUPREME COTTON

NEW BCRG01
**200 GSM SHORT SLEEVE
T-SHIRT (UNISEX)**

- 100% BEAM Supreme Cotton
- Available in 2 Colors
- Breathable & Durable
- Comfortably Styled & Soft Textured
- Enzyme Wash
- Matching Ribbed Collar
- Pre-Shrunk
- Side Seam
- Suitable for all Asian Physiques
- 200gsm | 5.90oz

Size	Shoulder	Chest	Sleeve	Length
XS	16"	36"	7"	25.5"
S	16.5"	38"	8"	27"
M	17.5"	40"	8.5"	28"
L	18.5"	42"	8.5"	29"
XL	19.5"	44"	9"	30"
2XL	21"	46"	9.5"	31"
3XL	22"	48"	10"	32"
4XL	22.5"	50"	10.5"	33"
5XL	23"	52"	11"	34"
7XL	25"	56"	12"	36"

Note : Size may varies +/-5% from the above mentioned chart.



Cloverplus Cotton are enzyme washed & they are more comfortable than normal cotton. It's the perfect solution for work, play & daily wear.

COLORS SELECTION



BCRG0101
WHITE



BCRG0102
BLACK



CLOVERPLUS
extra soft. extra comfort.

BPT0101 : WHITE
BEAM CLOVERPLUS
COTTON



BEAM LACOSTE COTTON

BPT01 POLO T-SHIRT (UNISEX)

- 100% BEAM Lacoste Cotton
 - Available in 8 Colors
 - BEAM Signature Polo Style
 - Designed to Fit Your Contour Perfectly
 - Enzyme Wash
 - Highly Breathable, Comfortable & Durable
 - Matching Buttons, Cuffs & Ribbed Collar
 - Pre-Shrunk
 - Smart Casual Outlook
- 220gsm | 6.49oz

Size	Shoulder	Chest	Sleeve	Length
2XS	15"	34"	7"	25"
XS	16"	36"	7.5"	26"
S	17"	38"	8"	27"
M	18"	40"	8.5"	28"
L	19"	42"	9"	29"
XL	20"	44"	9.5"	30"
2XL	21"	46"	10"	31"
3XL	22"	48"	10.5"	32"
4XL	23"	50"	11"	33"
5XL	24"	52"	11.5"	33.5"
7XL	26"	56"	12"	36"

Note : Size may varies +/-5% from the above mentioned chart.



CLOVERPLUS
extra soft. extra comfort.

Cloverplus Cotton are enzyme washed & they are more comfortable than normal cotton. It's the perfect solution for work, play & daily wear.

COLORS SELECTION



BPT0101
WHITE



BPT0102
BLACK



BPT0103
NAVY BLUE



BPT0104
RED



BPT0105
MAROON



BPT0106
LIGHT GREY



BPT0112
ROYAL BLUE



BPT0113
ORANGE



CLOVERPLUS
extra soft. extra comfort.



BCL0105 : MAROON
BEAM CLOVERPLUS
COTTON

BEAM PREMIUM COTTON

NEW BCL01
LONG SLEEVE
T-SHIRT (UNISEX)

- 100% BEAM Premium Cotton
- Available in 10 Colors
- Comfortable & Soft
- Enzyme Wash
- Matching Ribbed Collar
- Pre-Shrunk
- Tailored to Fit All Body Contours
- Tubular Body

- 170gsm | 5.01oz (BCL0101)
- 160gsm | 4.72oz (THE REST)

Size	Shoulder	Chest	Sleeve	Length
2XS	15"	34"	20"	25"
XS	16"	36"	21"	26"
S	17"	38"	22"	27"
M	18"	40"	23"	28"
L	19"	42"	24"	29"
XL	20"	44"	25"	30"
2XL	21"	46"	26"	31"
3XL	22"	48"	27"	32"
4XL	23"	50"	28"	33"
5XL	24"	52"	28.5"	33.5"

Note : Size may varies +/-5% from the above mentioned chart.



Cloverplus Cotton are enzyme washed & they are more comfortable than normal cotton. It's the perfect solution for work, play & daily wear.

COLORS SELECTION



BCL0101
WHITE



BCL0102
BLACK



BCL0103
NAVY BLUE



BCL0104
RED



BCL0105
MAROON



BCL0106
LIGHT GREY



BCL0112
ROYAL BLUE



BCL0113
ORANGE



BCL0117
YELLOW



BCL0146
KELLY GREEN



BEAM
QUALITY APPAREL

HDR30
HOODIE WITHOUT ZIP

Size	Shoulder	Chest	Sleeve	Length
2XS	15"	34"	23"	24.5"
XS	16"	36"	24.5"	25.5"
S	17"	38"	24.5"	26"
M	17.5"	41"	25"	27.5"
L	18.5"	43"	26"	28.5"
XL	19"	46"	27"	30"
2XL	20"	48"	27.5"	31"
3XL	20.5"	50"	28"	31.5"
4XL	21.5"	52.5"	29"	32.5"

Note : Size may varies +/-5% from the above mentioned chart.
• 220gsm | 6.49oz

Unlined Hood With Matching Drawstring



- Cotton / Polyester Blend
- Kangaroo Pockets With Ribbed Finishing
- Double Needle Cuffs And Waistband For Extra Durability

COLORS SELECTION



HDR3001
PEARL WHITE



HDR3002
ONYX BLACK



HDR3003
NAVY BLUE



HDR3004
CRIMSON RED



HDR3006
LIGHT GREY



BEAM
QUALITY APPAREL

HDR40
HOODIE WITH ZIP

Size	Shoulder	Chest	Sleeve	Length
2XS	15"	34"	23"	24.5"
XS	16"	36"	24.5"	25.5"
S	17"	38"	24.5"	26"
M	17.5"	41"	25"	27.5"
L	18.5"	43"	26"	28.5"
XL	19"	46"	27"	30"
2XL	20"	48"	27.5"	31"
3XL	20.5"	50"	28"	31.5"
4XL	21.5"	52.5"	29"	32.5"

Note : Size may varies +/-5% from the above mentioned chart.
• 220gsm | 6.49oz

Unlined Hood With Matching Drawstring



- Cotton / Polyester Blend
- Pouch Pockets
- Matching Zip
- Double Needle Cuffs And Waistband For Extra Durability

COLORS SELECTION



HDR4001
PEARL WHITE



HDR4002
ONYX BLACK



HDR4003
NAVY BLUE



HDR4004
CRIMSON RED



HDR4006
LIGHT GREY



RGN21
LONG SLEEVE
SWEAT SHIRT (UNISEX)

Size	Shoulder	Chest	Sleeve	Length
2XS	15"	33.5"	22"	24.5"
XS	16"	36"	24"	25.5"
S	17"	38.5"	24"	26"
M	17.5"	41"	25"	27.5"
L	18.5"	43"	25.5"	28.5"
XL	19"	45.5"	26.5"	30"
2XL	20"	48"	27"	31"
3XL	20.5"	50"	28"	31.5"
4XL	21.5"	52.5"	29"	32.5"
5XL	22"	53"	29"	34.5"
7XL	24"	59"	31.5"	35"



- Cotton / Polyester Blend
- Crew Neck, Long Sleeve Design
- Available in 6 Colors
- Double Needle Cuffs and Waistband For Extra Durability

Note : Size may varies +/-5% from the above mentioned chart.

• 220gsm | 6.49oz

COLORS SELECTION



RGN2101
PEARL WHITE



RGN2102
ONYX BLACK



RGN2103
NAVY BLUE



RGN2104
CRIMSON RED



RGN2106
LIGHT GREY



RGN2138
LIGHT PINK



BEAM
QUALITY APPAREL

AKJ01
LIGHTWEIGHT MICROFIBER
JACKET IN A BAG (PACKABLE)



Unique printed patterns

- 100% Light Weight Polyester
- UPF40 + Coating
- Fully Sewn Built in Hoodie Design
- Packable Drawstring Bag Included
- Comes with Unique Pattern Prints on Front Panel

Size	Chest	Sleeve	Length
S	40"	27.5"	25"
M	41"	28.5"	26"
L	43"	29"	26.5"
XL	44"	30"	27"
2XL	46"	31"	28"
3XL	48"	31.5"	29"
4XL	49"	32.5"	29.5"

Note : Size may varies +/-5% from the above mentioned chart.

COLORS SELECTION



AKJ0101
BLACK



AKJ0102
ROYAL BLUE



AKJ0103
LIME GREEN



AKJ0104
ORANGE



AKJ0105
YELLOW



AKJ0106
SKY BLUE



AKJ0107
RED



AKJ0108
BRIGHT PINK



AKJ0110
PINK



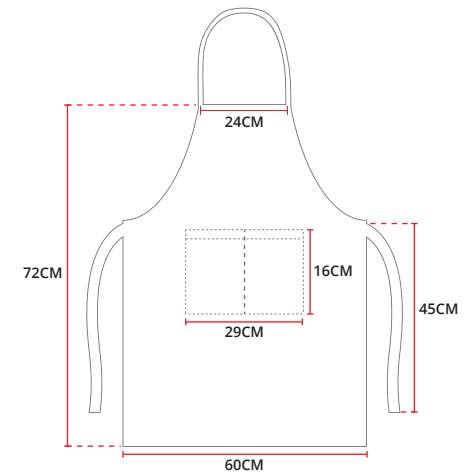
AKJ0111
WHITE



BEAM
QUALITY APPAREL

APR10
APRON
100% POLYESTER

- 100% Polyester
- Back Lace Design
- Front Pockets
- Customizable
- Available In 13 Colors
- Free Size
- 140gsm | 4.13oz



Note : Size may varies +/-5% from the above mentioned chart.

COLORS SELECTION



APR101 BURGUNDY APR102 ORANGE APR103 PEARL WHITE APR104 SKY BLUE APR105 LIME GREEN APR106 ROSE PINK APR107 YELLOW



APR108 BLACK APR109 COFFEE APR110 RED APR111 KHAKE APR112 NAVY BLUE APR113 BOTTLE GREEN

New Collection

BASEBALL CAP

BEAM
QUALITY APPAREL

BCP06

- Polyester Twill
- 6 Panel
- Available in 18 Colors
- Adjustable Back Velcro Strap
- Beautifully Curved Peak
- Breathable Eyelet on Each Panel
- Inner Seam Taping
- Inner Sweatband
- Neat Crown & Visor Stitching
- Top Button



Front

Rear

Top



Front Side

Side

Rear Side

COLORS SELECTION





FTL3
OXFORD CORPORATE
SHIRT (UNISEX)

Size	Shoulder	Chest	Sleeve	Length
S (38)	16.5"	37"	21.5"	27"
M (39)	17"	39"	22"	28.5"
L (40)	17"	40"	22"	29"
XL (41)	17.5"	42"	22"	30"
2XL (42)	18"	44"	22.5"	29.5"
3XL (43)	19"	46"	23"	30"
4XL (44)	19"	47"	23'	30"

Note : Size may varies +/-5% from the above mentioned chart.

• 170gsm | 5.01oz



- 60% Cotton + 40% Oxford Fabric
- Hidden Buttons Behind Collar For An Alternate Look
- One Chest Pocket On The Left
- Full Placket Buttons

COLORS SELECTION



FTL301
PEARL WHITE



FTL302
ONYX BLACK



FTL303
NAVY BLUE



FTL306
LIGHT GREY



FTL338
LIGHT PINK



FTL340
LAKE BLUE



BEAM
QUALITY APPAREL

ACS11

HIGH QUALITY CORPORATE LONG SLEEVE SHIRT

- 40% Cotton + 60% Polyester Fabric
- Full Placket Buttons
- Moisture Wicking Technology
- Poplin Finishing
- V-Edge Collar Design With Iron Fusing

UNISEX

Size	Shoulder	Chest	Sleeve	Length
S (38)	16.5"	37"	22"	28.5"
M (39)	17"	38"	22.5"	28.5"
L (40)	17.5"	39"	22.5"	28.5"
XL (41)	18"	40"	22.5"	29.5"
2XL (42)	18.5"	43"	23.5"	30"
3XL (43)	19.5"	45"	23.5"	31"
4XL (44)	19.5"	46"	24"	31"

Note : Size may varies +/-5% from the above mentioned chart.

- 120gsm | 3.54oz



BEAM
QUALITY APPAREL

FTL1

HIGH QUALITY CORPORATE LONG SLEEVE SHIRT

FEMALE

Size	Shoulder	Chest	Sleeve	Length
XS (35)	15"	35"	21"	23"
S (36)	15"	36"	21"	23.5"
M (37)	16"	38"	21"	24.5"
L (38)	16"	39"	21.5"	25"
XL (39)	17"	41"	21.5"	25.5"
2XL (40)	17"	42"	22.5"	26"
3XL (41)	17.5"	44"	22.5"	26.5"
5XL (42)	18"	45"	23"	27"

Note : Size may varies +/-5% from the above mentioned chart.

- 120gsm | 3.54oz

COLORS SELECTION



ACS110
MAROON RED



ACS111
BLACK



ACS112
LIGHT PINK



ACS113
LIGHT BLUE



ACS114
WHITE



COLORS SELECTION



FTL101
WHITE



FTL110
LIGHT BLUE



FTL138
PINK



TCSI

**HIGH QUALITY CORPORATE
SHORT SLEEVE SHIRT**

- 40% Cotton + 60% Polyester Fabric
- Full Placket Buttons
- Moisture Wicking Technology
- Poplin Finishing
- V-Edge Collar Design With Iron Fusing

UNISEX

Size	Shoulder	Chest	Sleeve	Length
S (38)	17"	36"	8"	28.5"
M (39)	17"	38"	8"	28.5"
L (40)	17.5"	41"	8"	29"
XL (41)	18"	42"	8.5"	29"
2XL (42)	18"	43"	8.5"	30"
3XL (43)	19"	46"	8.5"	30"
4XL (44)	19.5"	48"	9"	30.5"

Note : Size may varies +/-5% from the above mentioned chart.

- 120gsm | 3.54oz



FTS1

**HIGH QUALITY CORPORATE
SHORT SLEEVE SHIRT**

FEMALE

Size	Shoulder	Chest	Sleeve	Length
XS (35)	15"	35"	6.5"	23"
S (36)	16"	36"	6.5"	23.5"
M (37)	16"	38"	7"	24"
L (38)	16.5"	40"	7"	25"
XL (39)	17"	41"	8"	25.5"
2XL (40)	17"	42"	8"	26"
3XL (41)	17"	43"	8.5"	27"
5XL (42)	18"	46"	8.5"	27.5"

Note : Size may varies +/-5% from the above mentioned chart.

- 120gsm | 3.54oz



COLORS SELECTION



TCS101
WHITE



TCS102
BLACK



TCS110
LIGHT BLUE



COLORS SELECTION



FTS101
WHITE



FTS102
BLACK



FTS110
LIGHT BLUE





CBM3502
BLACK

CBM3503
NAVY BLUE

- 65% Polyester 35% Rayon
- 100% Polyester (Shell)
- Flat Collar Design
- 2 Buttons
- 3 External Pockets & 2 Internal Pockets
- Full Suit Available

BEAM
QUALITY APPAREL

PREMIUM

**2 BUTTON FITTED BLAZER
(MALE CUTTING)**

JACKET SIZE CHART

Size	Shoulder	Chest	Sleeve	Length
165/S	15.5"	34"	22"	26.5"
170/M	16"	37"	23"	27.5"
175/L	16.5"	39"	23.5"	28"
180/XL	17"	40"	24"	29"
185/2XL	17.5"	42"	24.5"	29.5"
190/3XL	18"	43"	25.5"	30"
195/4XL	18.5"	45"	25.5"	31"

Note : Size may varies +/-5% from the above mentioned chart.



PAT0102
BLACK

PAT0103
NAVY BLUE

PANT SIZE CHART

Size	Waist	Hip	Length
165/S	29"	36.2"	39.3"
170/M	30"	37.4"	40"
175/L	31.5"	38.5"	41"
180/XL	32.6"	40"	41.7"
185/2XL	34"	41.3"	42.5"
190/3XL	35.8"	43"	42.5"
195/4XL	37.4"	44.5"	42.5"

Note : Size may varies +/-5% from the above mentioned chart.



Classic Button Down
Back Pocket

Elastic Waist Band
Design



BEAM
QUALITY APPAREL

PREMIUM

2 BUTTON FITTED BLAZER (FEMALE CUTTING)



CBM2502
BLACK

CBM2503
NAVY BLUE

- 65% Polyester 35% Rayon
- 100% Polyester (Shell)
- Flat Collar Design
- 2 Buttons
- 2 External Pockets
- Full Suit Available

JACKET SIZE CHART

Size	Shoulder	Chest	Sleeve	Length
155/XS	13.5"	31"	22"	23"
160/S	13.5"	33"	22.5"	23"
165/M	14"	34"	22.5"	24"
170/L	14.5"	35"	22.5"	24.5"
175/XL	15.5"	38"	23"	25"
180/2XL	16"	39"	23"	26"
185/3XL	16"	40"	23.5"	26"
190/4XL	16.5"	42"	24"	27"

Note : Size may varies +/-5% from the above mentioned chart.



SKT0202
BLACK

SKT0203
NAVY BLUE

SKIRT SIZE CHART

Size	Waist	Hip	Length
155/XS	24.8"	33"	18"
160/S	26.3"	34.6"	18.3"
165/M	27.5"	36.2"	18.5"
170/L	29"	37.8"	19.7"
175/XL	30"	39.3"	19"
180/2XL	32.2"	41"	19"
185/3XL	33.8"	42.5"	19.3"
190/4XL	35.4"	44"	19.3"

Note : Size may varies +/-5% from the above mentioned chart.



2 Side Pockets in Front



Hidden Zipper at the Back